

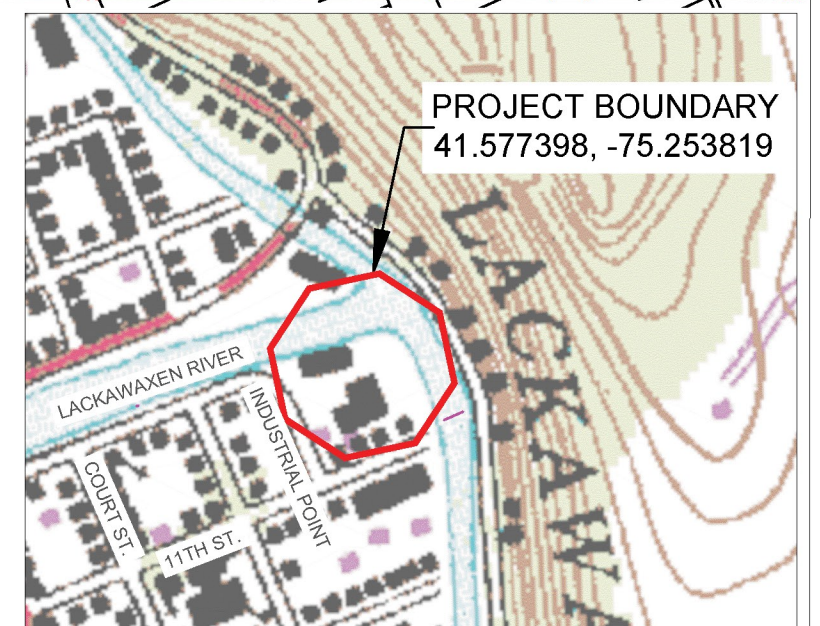
**Legend**

- 2' Existing Contour
  - FEMA 100 Year Floodplain Elev.
  - P- Property Lines
  - Trail to be painted onto existing pave
  - Approximate location of sewer manholes
  - Future Trail connection(s)
- \*Information gathered from publicly available GIS data sources

**Materials Key**

- |   |   |
|---|---|
| ① Proposed River Access Signage   | ⑥ Proposed 5' Wide Concrete ADA Access Path       |
| ② Proposed ADA Parking  | ⑦ Proposed 10' Stamped Concrete "Riverwalk" Trail |
| ③ Proposed Precast Concrete Boat Launch   | ⑧ Proposed Picnic Pavilions (w/ADA Picnic Tables) |
| ④ Proposed Public Restroom Facility   | ⑨ Proposed River Picnic Area(s)                   |
| ⑤ Proposed 10' Paved ADA Access Trail   | ⑩ Proposed 5' Wide Concrete Access Stairway       |
| ⑪ Existing Pavement to be Milled and Painted w/ Trail Designation to connect to community |   |

*\*Note: All items placed with minimal grading to achieve ADA requirements*



USGS QUAD: HONESDALE

**USGS LOCATION MAP**

SCALE: 1"=500'



NORTH



NORTH

**SITE PLAN**

SCALE: 1"=60'



WOODLAND DESIGN ASSOCIATES INC.

© 2020-2021 WOODLAND DESIGN ASSOCIATES INC  
ALL RIGHTS RESERVED, INCLUDING REPRODUCTION AND USE





1. Proposed River Access Signage



2. Proposed ADA Parking



3. Proposed Precast Concrete Boat Launch\*



4. Proposed Dry Compost Restroom Facility\*



5. Proposed 10' Paved ADA Access Trail



6. Proposed 5' Wide Concrete ADA Access Path



7. Proposed 10' Stamped Concrete "Riverwalk" Trail



8. Proposed Picnic Pavilions (w/ADA Picnic Tables)



9. Proposed River Lookout Picnic Area (Typ. of 2)

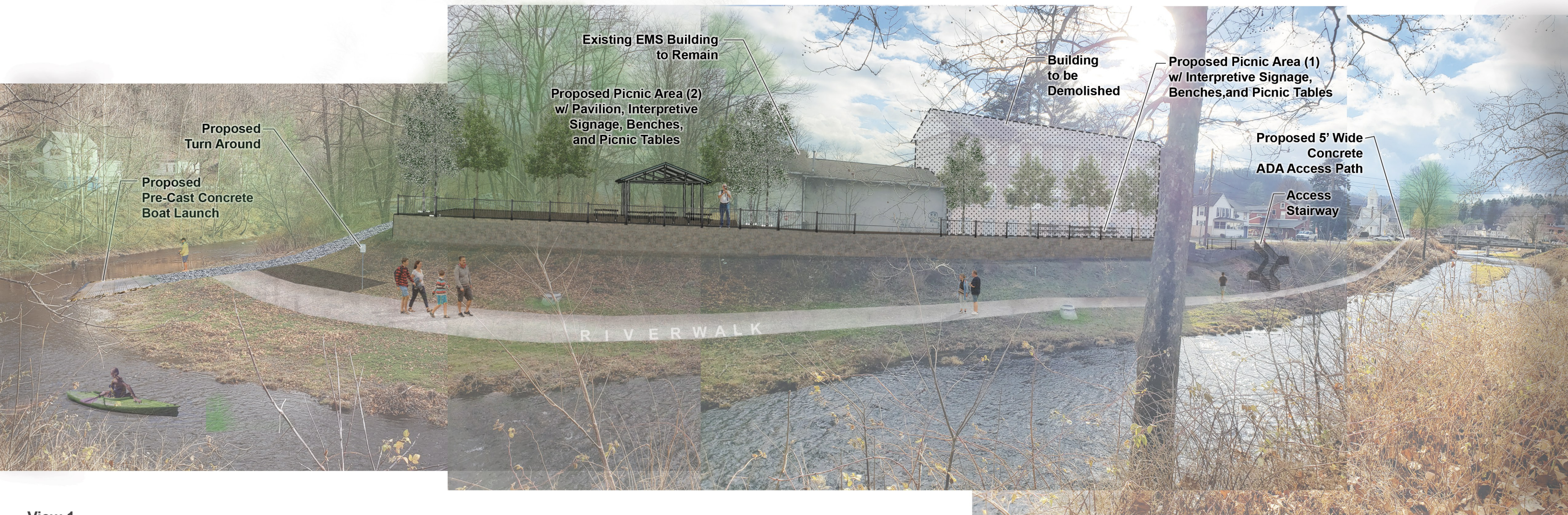


10. Proposed 5' Wide Concrete Access Stairway

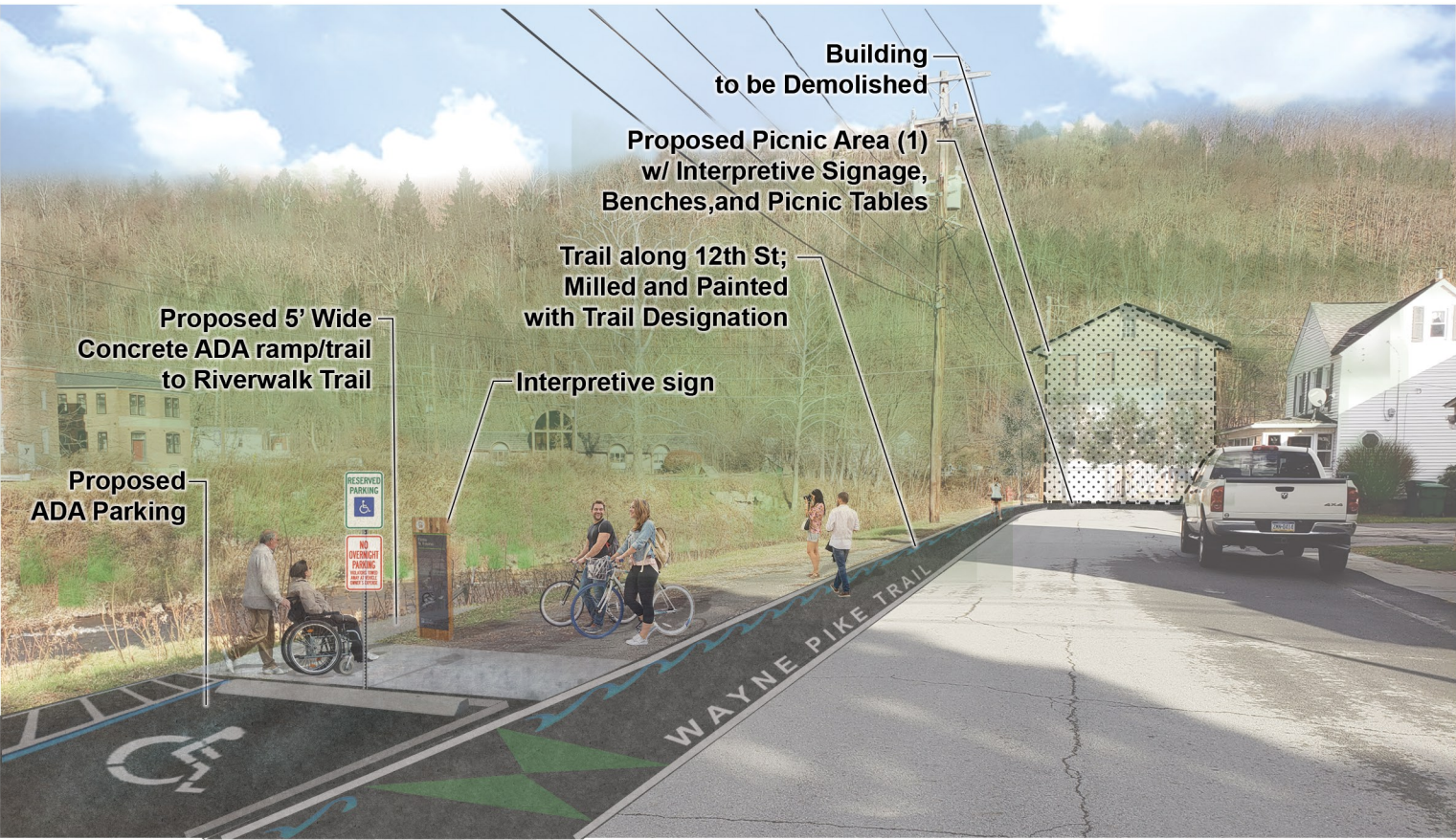
**\*See attached specification**

## Materials Images





**View 1**



**View 2**